

Word of the Day

Spring Term 2025

Week 21 – 10th February 2025



'Words unlock the doors to a world of understanding...'

This Week's Words

Grasshopper

soon

spread

welcome

together

piece

Shinobi

insecure

soar

mundane

persistent

protect



VOCABULARY NINJA

Grasshopper (Tier 1)

soon

spread

welcome

together

piece



VOCABULARY NINJA

Shinobi (Tier 2)

insecure

soar

mundane

persistent

protect



VOCABULARY NINJA



Grasshopper Word of the Day

Word of the Day:

Pronunciation / Syllables

soon
(soon)

Word Class
(adverb)

Definition:

If something
is going to happen soon,
it will happen after a short time.



Mrs Peters told the class lunch would be **soon**.

Synonym:

promptly

shortly

Antonym:

late

Prefix / Suffix:

-er

-est

Rhyme:

June

moon

Link Word:

too

quite



Grasshopper Word of the Day

Word of the Day:

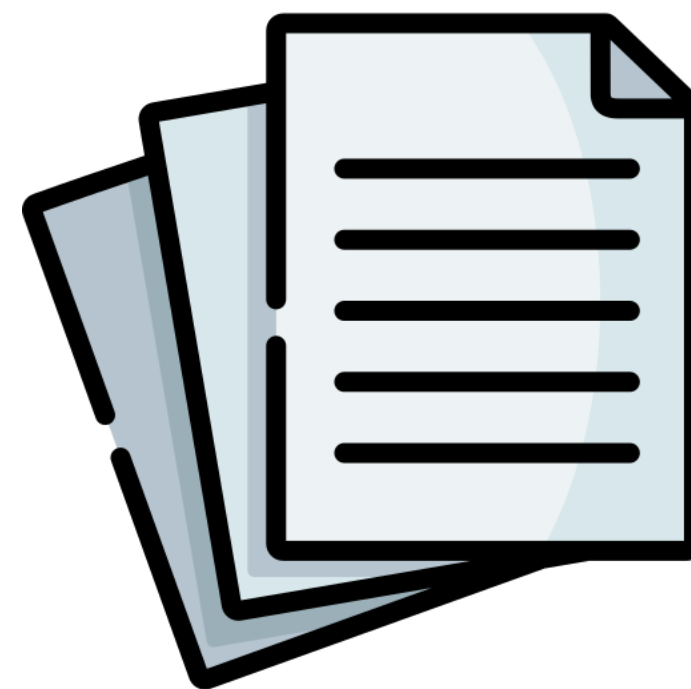
Pronunciation / Syllables

spread
(spread)

Word Class
(verb)

Definition:

If you spread something somewhere, you open it out or arrange it over a place or surface, so that all of it can be seen or used easily.



Mr Fox told the class to **spread** the papers.

Synonym:

circulate

reach

Antonym:

shrink

compress

Prefix / Suffix:

wide-

-ing

Rhyme:

said

head

Link Word:

evenly

widely



Grasshopper Word of the Day

Word of the Day:

welcome
(wel-come)

Word Class
(verb)

Pronunciation / Syllables

Definition:

If you welcome someone, you greet them in a friendly way when they arrive somewhere.



Ms Day **welcomed** the new student to the class.

Synonym:

greet

embrace

Antonym:

exclude

reject

Prefix / Suffix:

un-

-ed

Rhyme:

Link Word:

formally

kindly



Grasshopper Word of the Day

Word of the Day:

together
(to-geth-er)

Word Class
(adverb)

Pronunciation / Syllables

Definition:

If people do something together,
they do it with each other.



The class worked **together** to solve the maths problem.

Synonym:

closely

jointly

Antonym:

apart

separately

Prefix / Suffix:

al-

-ness

Rhyme:

whether

leather

Link Word:

gather

close



Grasshopper Word of the Day

Word of the Day:

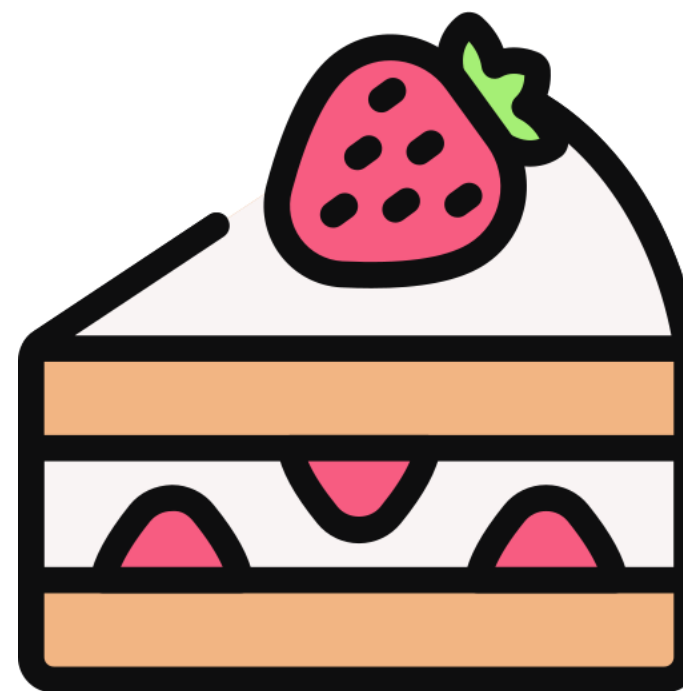
Pronunciation / Syllables

piece
(*piece*)

Word Class
(noun)

Definition:

A piece of something is an amount of it that has been broken off, torn off, or cut off.



Kabir enjoyed a **piece** of cake after lunch.

Synonym:

chunk

scrap

Antonym:

entirely

whole

Prefix / Suffix:

a-

-s

Rhyme:

peace

cease

Link Word:

missing

sharp



Shinobi Word of the Day

Word of the Day:

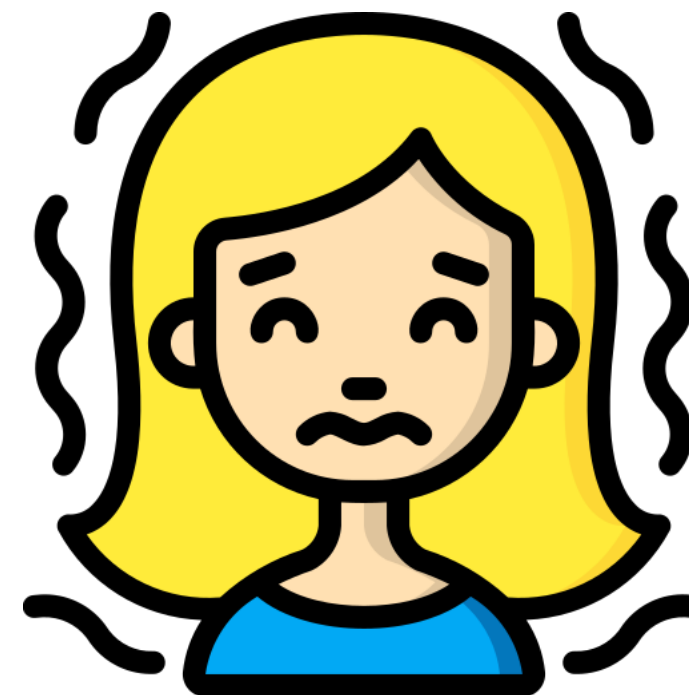
insecure
(in-se-cure)

Word Class
(adjective)

Pronunciation / Syllables

Definition:

If you are insecure, you lack confidence because you think that you are not good enough or are not loved.



Maria felt **insecure** about sharing her answer.

Synonym:

anxious

hesitant

Antonym:

certain

confident

Prefix / Suffix:

-ly

Rhyme:

Link Word:

deeply

unusually



Shinobi Word of the Day

Word Class
(verb)

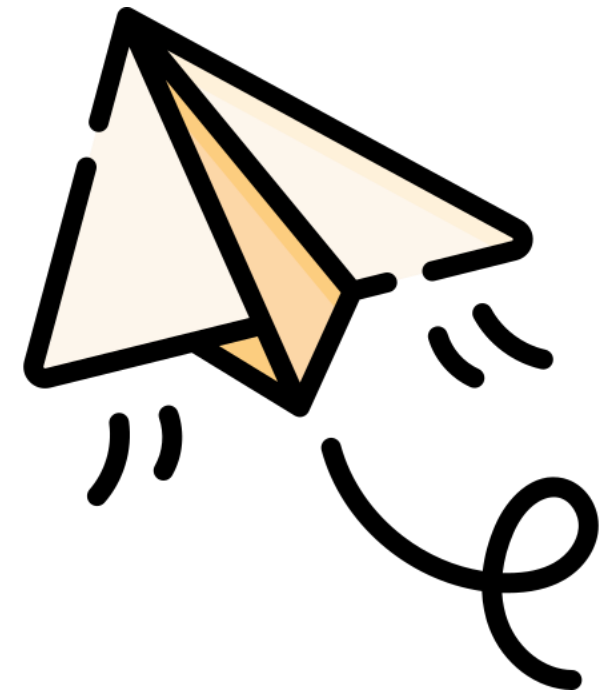
Word of the Day:

soar
(soar)

Pronunciation / Syllables

Definition:

If something such as a bird soars into the air, it goes quickly up into the air.



The paper airplane began to **soar** across the classroom.

Synonym:

ascend

rise

Antonym:

decline

fall

Prefix / Suffix:

-ing

-ed

Rhyme:

more

war

Link Word:

gracefully

rapidly



Shinobi Word of the Day

Word of the Day:

mundane
(mun-dane)

Word Class
(adjective)

Pronunciation / Syllables

Definition:

Something that is mundane is very ordinary and not at all interesting or unusual.



The class thought answering the question was **mundane**.

Synonym:

humdrum

normal

Antonym:

uncommon

unusual

Prefix / Suffix

-ly

-ness

Rhyme:

again

brain

Link Word:

remarkably

painfully



Shinobi Word of the Day

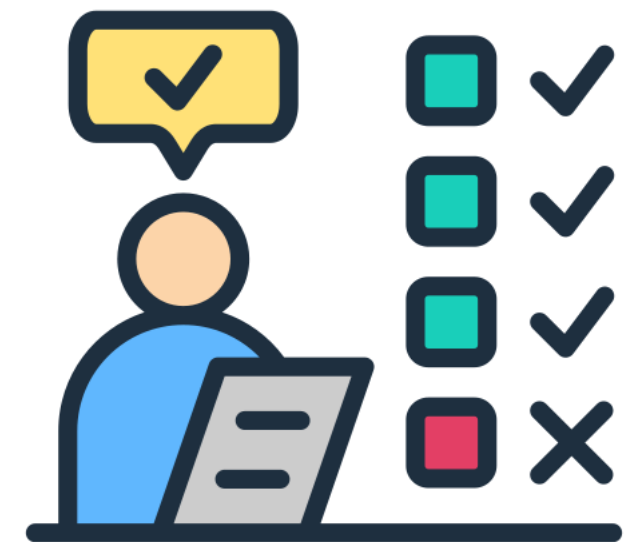
Word of the Day: **persistent**
(*per-sis-tent*)

Word Class
(adjective)

Pronunciation / Syllables

Definition:

Something that is persistent continues to exist or happen for a long time; used especially about bad or undesirable states or situations.



Kay was **persistent** when trying to solve the question.

Synonym:

consistent

insistent

Antonym:

ceasing

temporary

Prefix / Suffix:

non-

-ly

Rhyme:

consistent

assistant

Link Word:

extremely

highly



Shinobi Word of the Day

Word Class
(verb)

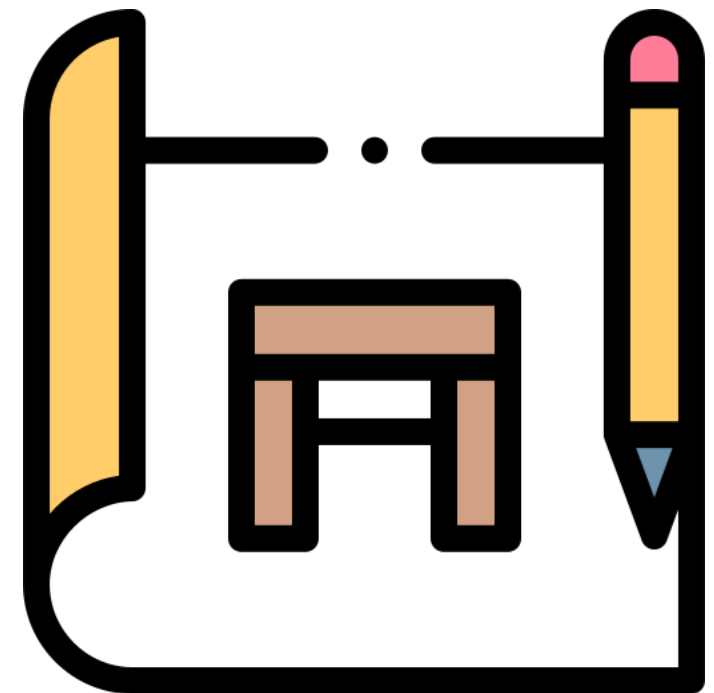
Word of the Day:

protect
(*pro-~~te~~-ct*)

Pronunciation / Syllables

Definition:

To protect someone or something means to prevent them from being harmed or damaged.



Jim was told to **protect** the desk by not drawing on it.

Synonym:

safeguard

shelter

Antonym:

destroy

waste

Prefix / Suffix:

over-

-ion

Rhyme:

effect

direct

Link Word:

carefully

actively

Vocabulary Laboratory



Describe / Definition:

Use it in a sentence:

Focus Word (write below):

Word Class:

Synonyms:

(words with same / similar meaning)

Antonyms:

(words with opposite meaning)

Draw your sentence:

Rhymes:

(words that sound the same)

Link Words:

(Example: football = pitch, team, player)

Vocabulary Visualiser

Draw the
Grasshopper words
and bring them to life.



Word: spread

Word: together

Word: welcome

Word: piece



Vocabulary Visualiser

Draw the **Shinobi**
words and bring
them to life.



Word: insecure

Word: mundane

Word: soar

Word: protect



Matching Meanings

Draw lines from the **Grasshopper** words to their definitions.



Grasshopper Word

Grasshopper Definitions

soon

If you *** something somewhere, you open it out or arrange it over a place or surface, so that all of it can be seen or used easily.



spread

If people do something ***, they do it with each other.



welcome

If something is going to happen ***, it will happen after a short time.



together

A *** of something is an amount of it that has been broken off, torn off, or cut off.



piece

If you *** someone, you greet them in a friendly way when they arrive somewhere.



Matching Meanings

Draw lines from the **Shinobi** words to their definitions.



Shinobi Word

Shinobi Definitions

insecure

Something that is *** is very ordinary and not at all interesting or unusual.



soar

If something such as a bird *** into the air, it goes quickly up into the air.



mundane

Something that is *** continues to exist or happen for a long time; used especially about bad or undesirable states or situations.



persistent

To *** someone or something means to prevent them from being harmed or damaged.



protect

If you are ***, you lack confidence because you think that you are not good enough or are not loved.





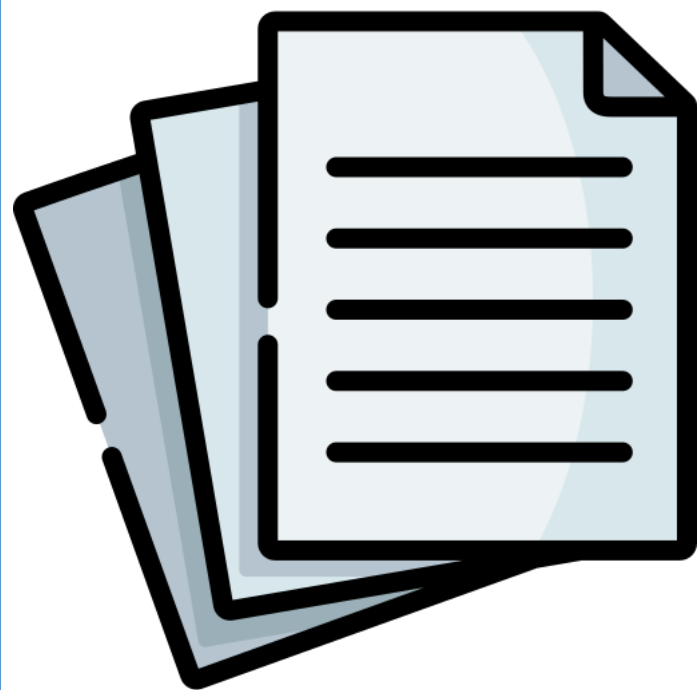
Display Slips

The following slides are for classroom display. As you teach each Word of the Day, words can be displayed in the classroom to enable pupils to use the taught vocabulary in an independent manner.





soon



spread





welcome

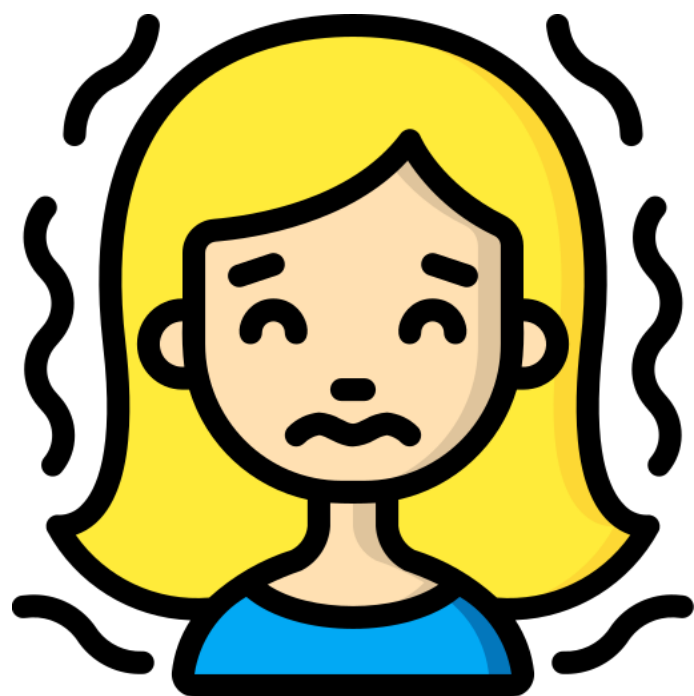
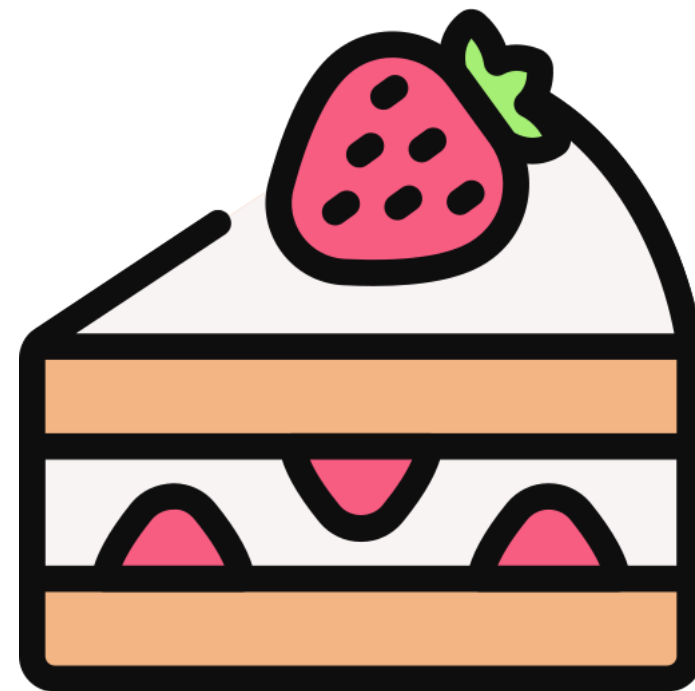


together





piece

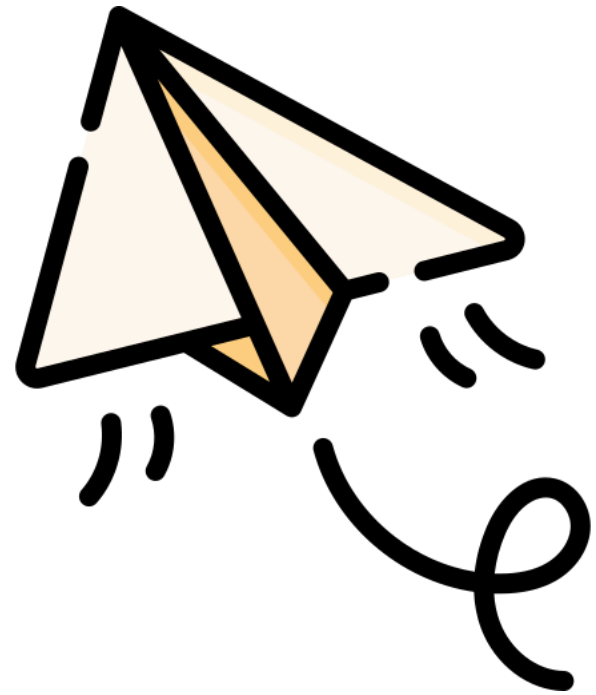


insecure





soar

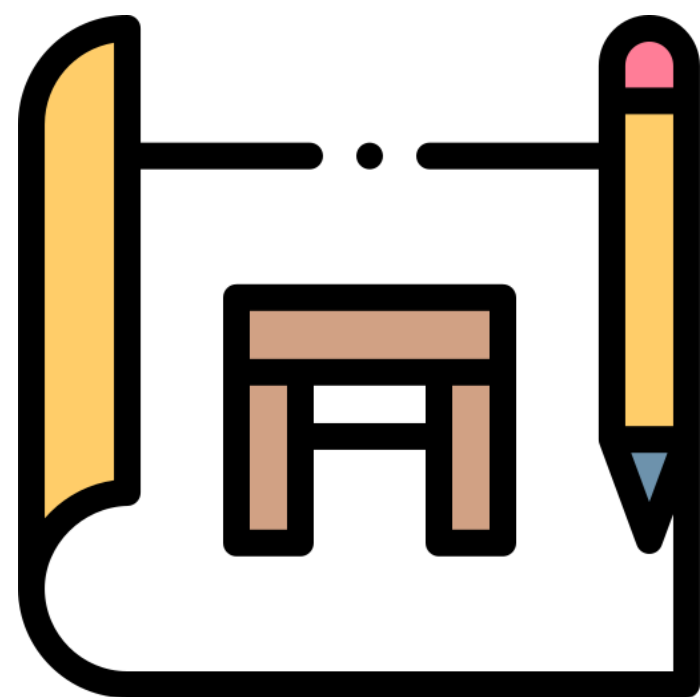
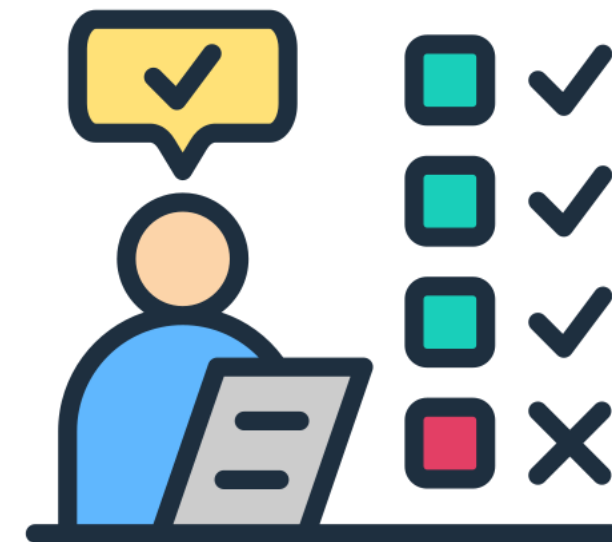


mundane





persistent



protect






Font Variation

The following display slips contain the same words, but have a more regular font, which have a more regular formation of 'a' and 'g'. Futura is the name of the font.



worried



opini

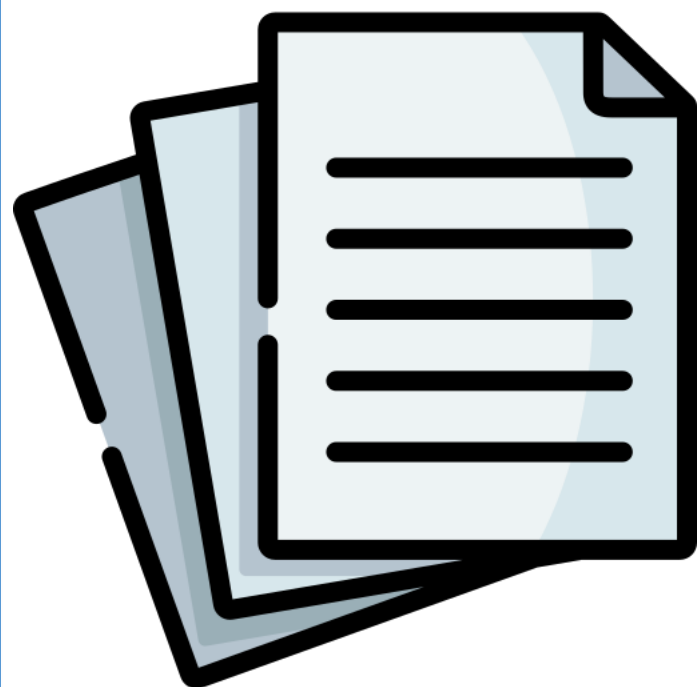


asure





soon



spread





welcome

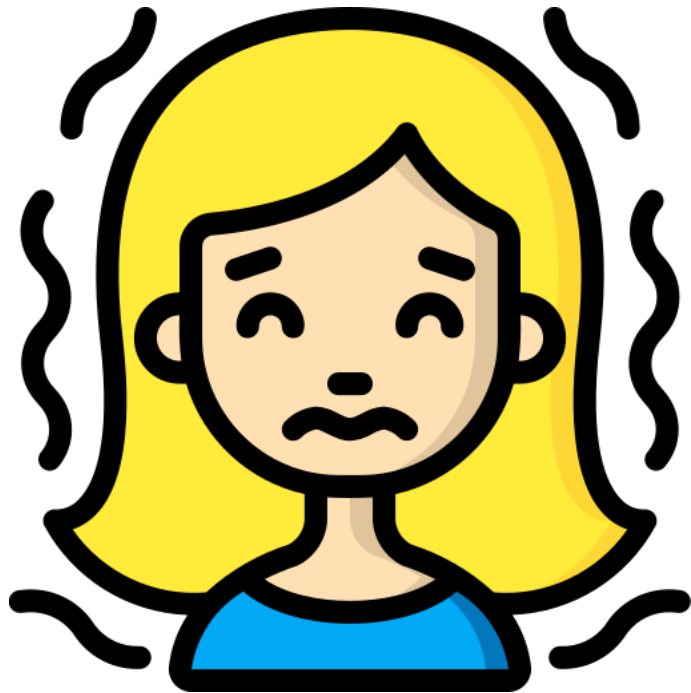
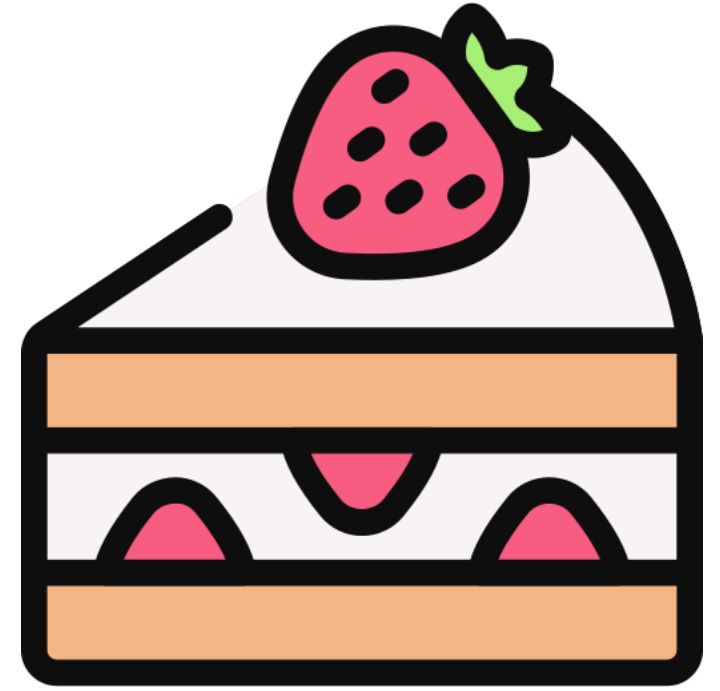


together





piece

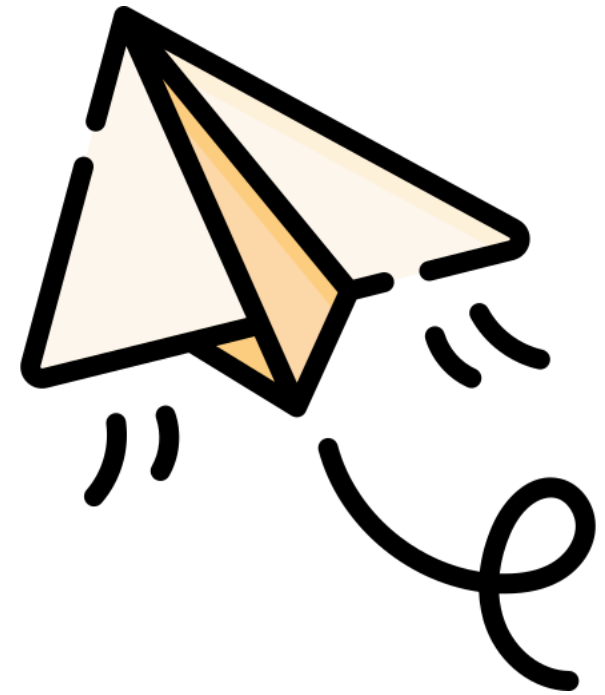


insecure





soar

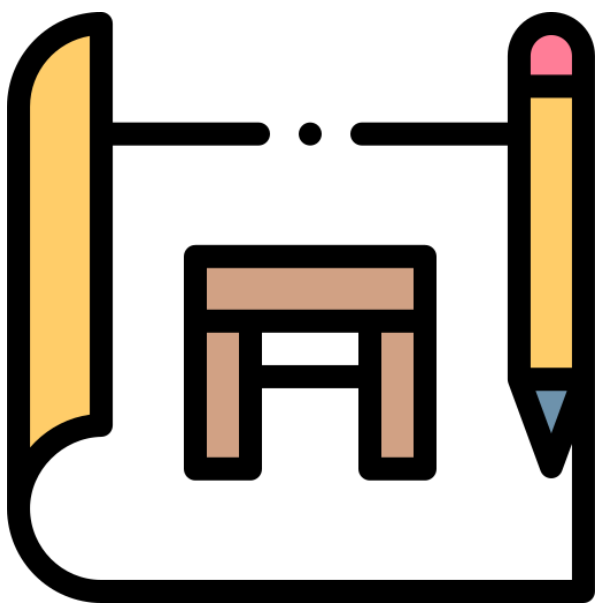
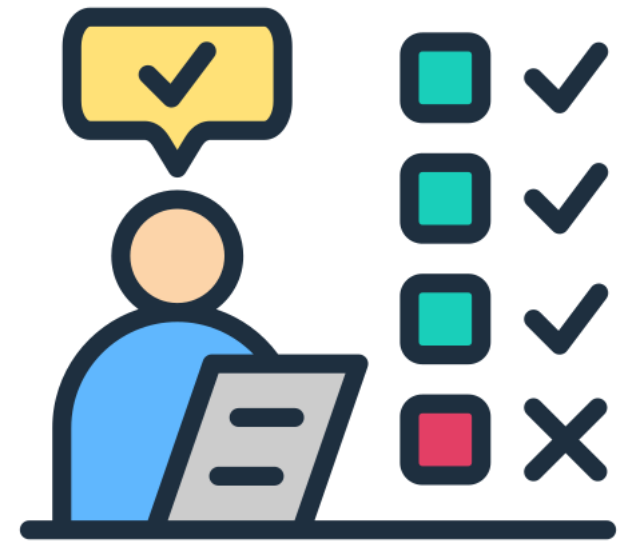


mundane





persistent



protect

